



The thrill and the freedom  
brought as close as possible  
by the Targa 38 OPEN



Every. Perfect. Detail.



## Agile, open-to-the-skies fun

The fastest Fairline built to date, the Targa 38 OPEN is the very definition of open-top fun.

With the largest roof-opening area for a boat of this size, when you speed across the bay in the Targa 38 OPEN, the cresting waves and sun are almost palpable.

Its impeccable handling, courtesy of a world-renowned hull and sparkling engine dynamics, means the Targa 38 OPEN is perfect for day-trip escapades. Twin seats at a helm, companion seating opposite, a wet bar unit (with a griddle, sink and fridge) and an optional fold-out table in the cockpit mean you can relax among great company in great style.

Below decks, clever honing by our expert designers and gifted craftsmen has allowed for a comfortable saloon and well specified galley. This surprising 38-footer even offers the option of a submersible platform suitable for carrying a Sea-Doo Spark too. Enjoy!



# Finely crafted so you can share the exhilaration

Reliable and neat, the Targa 38 OPEN offers great all-round vision with big boat thinking throughout. Take the optional air conditioning for example, it's a high capacity system ensuring that there's always something in reserve. The same could be said about the engine choices. With 40+ knot performance at your fingertips, the journey is as exhilarating as the destination.

- **Electric canvas sliding roof**
- **Master forward cabin and en suite with separate shower compartment**
- **Garmin GMI 20 multi-function instrument system**

#### Optional equipment highlights:

- Submersible bathing platform
- Volvo joystick and bow thruster
- Sofa conversion to third berth in guest cabin
- Folding teak table with sunpad conversion to cockpit
- Choice of hull colours – Midnight Blue, Sable, Steel Blue or White Sand
- A choice of powerful engines:
  - 2 x Volvo Penta D4-260 EVC stern drive, diesel with 260mhp each and a maximum speed of 33 knots
  - 2 x Volvo Penta D4-300 EVC stern drive, diesel with 300mhp each and a maximum speed of 37 knots
  - 2 x Volvo Penta D6-370 EVC stern drive, diesel with 370mhp each and a maximum speed of 42 knots





# Power across the bay in open-top style with the Targa 38 OPEN



# Choosing the interior is fun too

In the spirit of building the perfect yacht at every possible level, we have also carefully created four different interior design schemes for you to choose from:



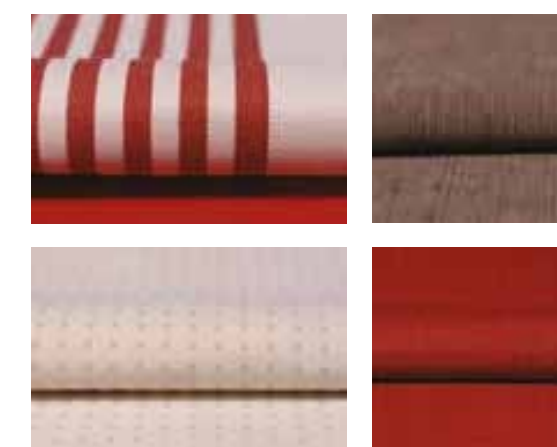
## AMALFI

Inspired by Liguria's local architecture, this scheme exudes the sunny warmth synonymous with fragrant Italian lemon trees and the umbrella-lined shores of the Amalfi coast.



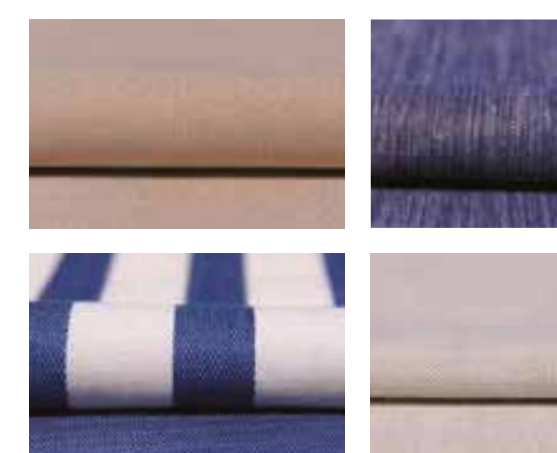
## CAPRI

Understated, earthy colours, effortlessly combined with rich natural textures. All the hallmarks of an interior design collection that is as gentle as the Mediterranean breeze.



## HAMPTONS

Evoking elegant vintage design cues, whilst offering a bold and contemporary interpretation of the luxury that was once the preserve of America's East Coast.



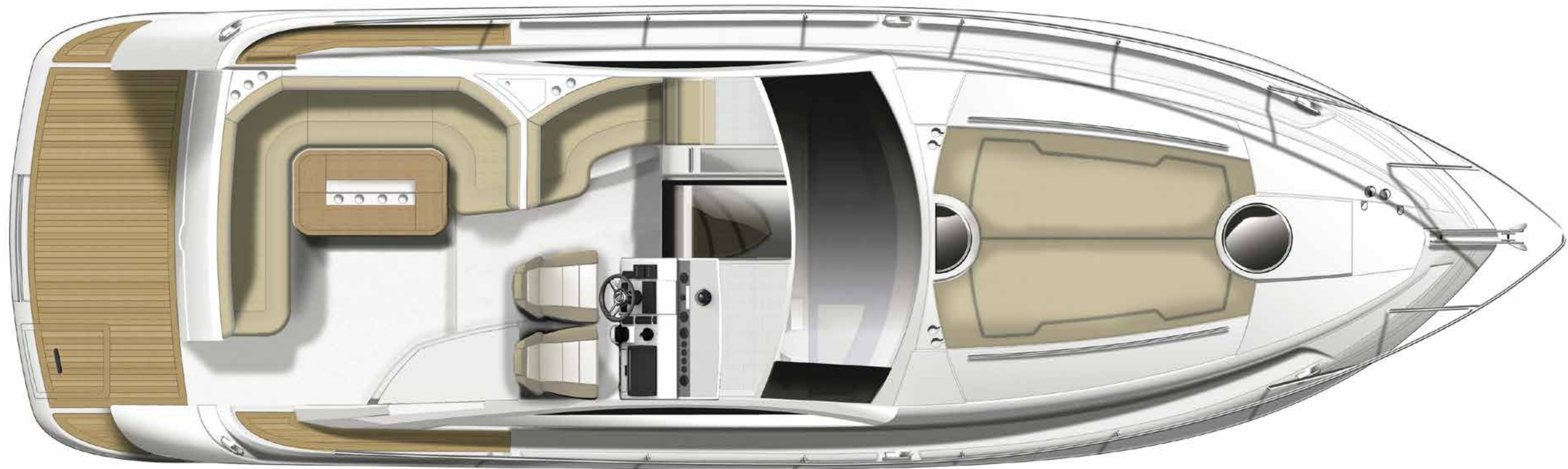
## ST. TROPEZ

An ode to the sea where all manner of deep, oceanic blues tastefully swirl with muted greys, delicate creams and classic nautical motifs.



## Responsive performance

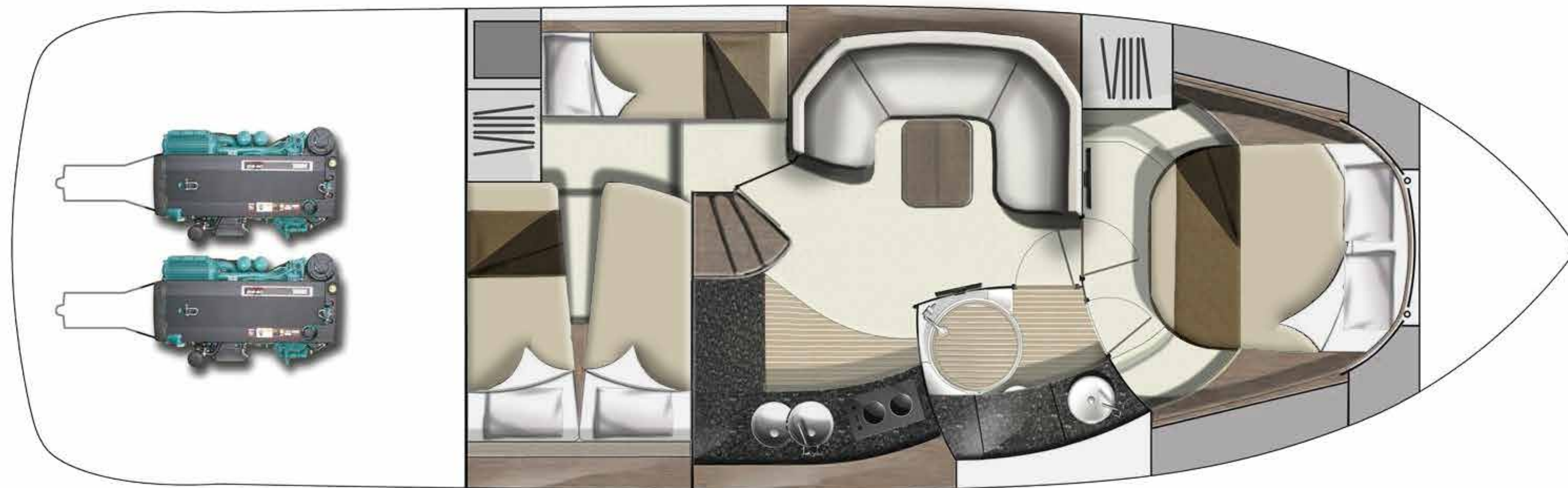
- Length overall (inc. pulpit): 39'10" (12.13m)
- Length overall (inc. pulpit): 40'9" (12.43m) with submersible platform
- Length overall (exc. pulpit): 38'1" (11.61m)
- Beam (inc. gunwale): 11'11" (3.64m)
- Number of berths: 4 – 7
- Draught: 3'4" (1.02m) unloaded
- Height above waterline (inc. arch & nav. light mast): 13'2" (4.01m)
- Transport height: 11'10" (3.61m)
- Dry weight (approx.): 7.57 imp. tons / 8.47 US tons (7,692kg)
- Fuel capacity: 140 gallons / 168 US gallons (636 litres)
- Water capacity (inc. calorifier): 65 gallons / 78 US gallons (296 litres)



## Deck Plan – Main Deck

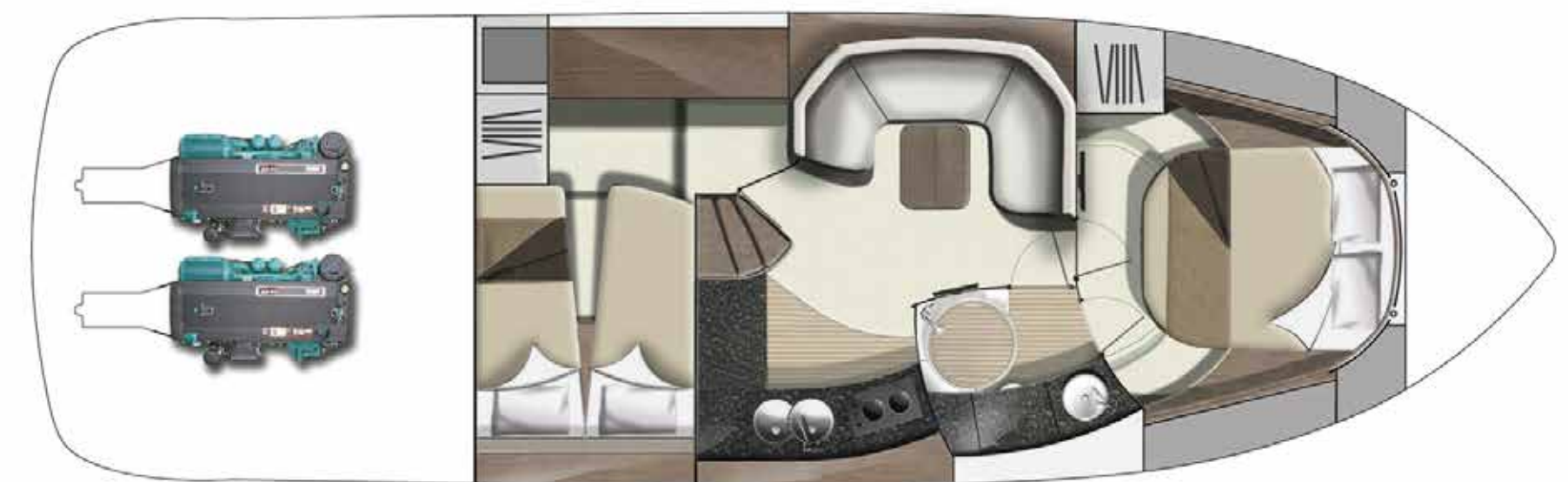
The large opening roof and luxurious seating of the Targa 38 OPEN create a bright and airy cockpit with space for all.

*Aft Guest Cabin with optional sofa bed*



## Deck Plan – Lower Deck

With access to the cabins from the central saloon, movement flows easily through the lower deck.



# Finally, everything else that goes into making the perfect yacht...

## DECK

Anchor chain locker  
Anchor winch (electric)  
Anchor winch controls  
Calibrated anchor chain  
Concealed telescopic swim ladder to bathing platform  
Ensign & staff  
Fender set  
Full set of IMCO navigation lights  
Hot & cold water transom shower  
Moulded non-slip deck surface  
Recessed self-draining area on foredeck for coach-roof cushions  
Riding light  
Rubbing strake  
Self-stowing Delta® anchor  
Stainless steel bow, spring & stern cleats  
Stainless steel bow fairleads  
Stainless steel handrails  
Stainless steel pulpit  
Stainless steel stemhead roller  
Stainless steel transom wing cleats  
Teak laid bathing platform  
Toughened glass curved windscreen  
Transom gate from cockpit to integral bathing platform  
Twin horns  
Water filler  
Windscreen washers  
Windscreen wipers

## HELM POSITION

12V socket  
Bilge pump switches with integral operating warning lights & audible alarms  
Twin helm seats  
Chart stowage  
Chart table & light  
Co-pilot grab rail  
Controls for engine bay fire extinguisher system  
Drinks holders  
Electronic single-lever throttle & gear controls for port & starboard engines  
Folding foot plinth  
Fuel gauges  
Full engine instrumentation inc: tachometers, oil pressure gauges, temperature gauges, battery condition indicators, audible alarms & engine hour meters  
Garmin GMI 20 digital multi-function instrument system with colour display  
Garmin VHF 300i marine radio  
High speed magnetic compass  
Remote anchor winch controls  
Rudder position indicator  
Searchlight with remote control at helm  
Sterndrive trim controls  
Waterproof switches for navigation & riding lights, windscreen wipers & engine bay extractor fans

## ELECTRICAL SYSTEMS

All 240V, 24V & 12V circuits (where applicable) protected by circuit breakers with main electrical load control panel  
Heavy duty circuit breakers  
Isolating switches to all batteries

### 12 Volt

Batteries - 2 x heavy duty batteries for domestic services  
Battery - 1 x heavy duty battery for exclusive port engine starting  
Battery - 1 x heavy duty battery for exclusive starboard engine starting  
Emergency battery coupling system permits starboard engine battery to start port engine if domestic batteries accidentally discharged

### 240 Volt

Polarity check & earth leakage protection system  
Power points throughout fed from shore power or generator  
Regulated battery charger 80amp  
Shore power supply

## COCKPIT

12V heavy duty weatherproof socket  
Bathing platform lights  
Boat hook  
Central dining area  
Cockpit bar with sink, hot & cold water & integrated waste bin  
Cockpit carpet  
Cockpit hood on stainless steel frame, converting to sun canopy  
Companion seating to helm  
Drinks holders  
Engine bay access hatch with stainless steel electric ram  
Fender stowage  
Glove locker  
Life raft stowage  
Manual bilge pumps  
Mooring warps  
Moulded non-slip deck surface  
Radar arch with down-lighting  
Stainless steel handrails  
Step for side deck access  
Stowage lockers under cockpit seats  
Warp lockers

## INTERIOR DECOR

Choice of interior finishes from the Amalfi, Capri, Hamptons or St Tropez interior styling ranges selected by the Fairline Interior Design Team

**HULLFORM & CONSTRUCTION**

All gel coat & glass fibre hand laid with unidirectional, biaxial & woven rovings  
Antifouling protection to hull  
Deep ‘V’ forward; 18° deadrise aft  
Design, layout & detailing by the Fairline Design Team  
Naval architecture & structural engineering by Bernard Olesinski  
Full length moulded spray deflectors  
Hull/deck join bolted & bonded  
Integrally moulded engine bearers  
Isophthalic gel coat backed by isophthalic resin-rich powder-bound glass mat  
Polyurethane foam cores throughout deck for strength & thermal insulation  
Transverse & longitudinal strengthening stringers throughout hull

**MAIN SALOON**

19” flatscreen TV with Fusion RA205 & wireless connectivity  
Access to day heads  
Aerial & connections for television  
Cocktail table converts to dining table  
Curved companionway timber steps with solid wood handrail  
Deck hatch with flyscreen & blind  
First aid kit  
Full-height standing headroom  
LED ceiling lights  
Handrail  
Lockers (overhead)  
Panoramic hull windows  
Sliding door to cockpit with integral blind system  
Sofa  
Stowage lockers under dinette seating  
Underfloor stowage hold

**GALLEY**

2-burner gas hob, oven & grill  
Control panel for 12V/240V domestic electrical circuits  
Crockery stowage  
Fire extinguisher  
Foundations® work surface with covers  
LED ceiling lights  
Integrated waste bin  
Lacquered cupboard doors  
Lockers (overhead)  
Panoramic hull windows  
Refrigerator 4.6cu.ft. (130L) with automatic 12V/240V change-over  
Sink/drainер with hot & cold mixer tap  
Work surface lights

**MASTER CABIN**

Access to shower/wc compartment  
Bedside stowage  
Full-height standing headroom  
LED ceiling lights  
Hatch to foredeck  
Headboard shelf unit  
Lockers (overhead)  
Mirror  
Moulded stowage locker under hinged bedboard for optional stool stowage  
Opening portholes  
Oversized double bed  
Twin trinket lockers  
Wardrobe

**AFT CABIN**

Bedside stowage  
Chest of drawers  
Full length berths x 2 with conversion to double bed  
LED ceiling lights  
Headboard shelf unit  
Mirror  
Opening portholes  
Opening window to cockpit  
Reading lights  
Wardrobe

**SHOWER/WC COMPARTMENTS**

220V/240V shaving point  
Electric silent-flush freshwater toilet  
Extractor fan  
Foundations® vanity unit locker and basin with hot & cold pressurised water  
Full set of bathroom fittings  
Full standing height shower with integral shower tray, adaptable shower head & rotating screen  
Handbasin with hot & cold water  
Mirror  
Opening porthole  
Shower tray automatic pump-out system  
Stowage locker

**ENGINES & STERNGEAR**

Aerodynamically designed engine air intakes  
Automatic bilge pumps for engine bay with manual ‘on’ override  
Automatic engine bay fire extinguisher system  
Electric engine bay fans  
Electric trim tabs with cathodic protection  
Engine bay lights  
Engine room soundproofing  
High capacity emergency manual bilge pump system with changeover valves  
Sea cocks on all inlets/outlets below waterline

**FUEL SYSTEM**

Alloy fuel tanks x 2  
Changeover valve system to permit each engine to draw fuel from / return fuel to, either tank  
Emergency fuel shut-off valves  
High capacity water separators & fuel filters  
Individual fillers & vents to port & starboard

**FRESHWATER SYSTEM**

Automatic, pressurised supply  
Calorifier hot water system  
Water tank

**GAS**

All gas burners fitted with flame failure protection devices  
Copper, polythene sheathed supply pipe  
Single tail feed with regulator & gas low system test meter  
Stowage for gas bottle in self-venting cockpit locker

**USA SPECIFICATIONS**

(in addition to, or in lieu of those listed above)  
Voltage - 2 x 110V (220V) 60Hz

Whilst every effort is made to keep all sales literature up to date, it should not be regarded as an infallible statement of current specifications and does not constitute an offer for the sale of any particular boat. We continually seek to improve the specification and design of our boats, so alterations and upgrades to specifications take place continually.

Appointed dealers are not agents of Fairline Yachts Ltd and are not authorised to commit Fairline Yachts Ltd by any express or implied undertaking or representation.

Performance Figures: Power quoted in our literature for diesel inboard engines is crankshaft output.

Performance Estimates: Performance estimates are given in good faith, but are in no way guaranteed for any particular model. Dirt on the bottom of the boat, damage to the propellers, engine tuning, external water and air temperatures, and the weight of the crew, fuel and water carried can all adversely affect performance. For those and other reasons we can give no performance guarantees.

# An unrivalled dealership network

Just like the many parts that make up one of our extraordinary yachts, so too are international dealers handpicked and perfectly placed to cover anything and everything you could want from Fairline (you can visit [fairline.com](https://www.fairline.com) for details of your nearest dealer).

Fairline Algarve	Fairline Chesapeake	Fairline Galicia	Fairline Lebanon	Fairline Norway	Fairline Southampton
Fairline Athens	Fairline China	Fairline Golfe du Lion	Fairline Malta	Fairline Novigrad	Fairline Sverige
Fairline Benelux & W. Germany	Fairline CIS	Fairline Hamburg	Fairline Marbella	Fairline Philippines	Fairline Switzerland
Fairline Brazil	Fairline Colombia	Fairline Hong Kong	Fairline Menorca	Fairline Poland	Fairline Thailand
Fairline Budapest	Fairline Costa Blanca	Fairline Ibiza	Fairline Mexico	Fairline Queensland	Fairline Turkey
Fairline Cala d'Or	Fairline Côte d'Azur	Fairline India	Fairline Monaco	Fairline Russia	Fairline Ukraine
Fairline California	Fairline Cyprus	Fairline Indonesia	Fairline Morocco	Fairline Salzburg	Fairline Victoria
Fairline Cape Town	Fairline East coast	Fairline Israel	Fairline New South Wales	Fairline Singapore	Fairline Wales
Fairline Cascais	Fairline Eastbourne	Fairline Italia	Fairline New York	Fairline Sotogrande	Fairline Western Australia
Fairline Channel Islands	Fairline Finland	Fairline Japan	Fairline New Zealand	Fairline South Africa	Fairline Zagreb
Fairline Chertsey	Fairline Florida	Fairline Korea	Fairline North Mallorca	Fairline South Mallorca	

